

WETHERBY MASCOT RACE

THE YORKSHIRE YOUNG FARMERS RURAL RECYCLING MASCOT STEEPLE CHASE

(1 FURLONG OVER 5 HURDLES, HANDICAP START)

for Mascots of all ages

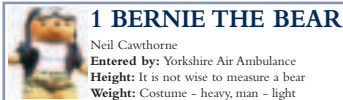
Total prize fund £1000

Prize money to go to Charity of Mascot's choice.

Winner £150; Second £100; Third £75;

Last home (without stopping) £50.

Best Turned Out £100, reserve £75



1 BERNIE THE BEAR

Neil Cawthorne
Entered by: Yorkshire Air Ambulance
Height: It is not wise to measure a bear
Weight: Costume - heavy, man - light

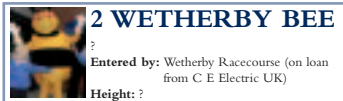
Bernie the Bear spends his life raising money for Yorkshire Air Ambulance and so is in his element today. He would like to thank all Yorkshire Young Farmers for their money raising efforts especially Neil from Selby who is spending the day inside him. Bernie is runner number 1 and intends to be number one across the line.



6 HOUND DOG

Oliver Robinson
Entered by: Bingley Harriers and Athletic Club
Height: 6'
Weight: 12st

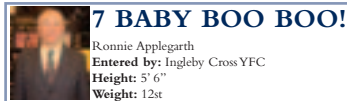
Hound Dog is their junior mascot, they produce a monthly Newsletter and monthly awards to outstanding athletes.



2 WETHERBY BEE

?
Entered by: Wetherby Racecourse (on loan from C E Electric UK)
Height: ?
Weight: ?

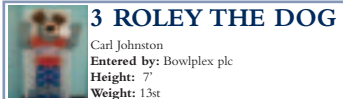
Bee Safe is the hero bear that appears in safety videos for young people. Today he is running as Wetherbee on their home turf so watch out for a spectacular performance. He will be galloping home to help raise funds for ?????



7 BABY BOO BOO!

Ronnie Applegarth
Entered by: Ingleby Cross YFC
Height: 5' 6"
Weight: 12st

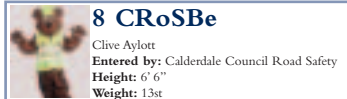
Baby Boo Boo is full of surprises and she will boo boo unless she wins prizes. She is supporting the campaign to reduce waste by using real nappies rather than disposable ones. She has a real big nappy of her own. Age may not seem to be on her side but is one to watch.



3 ROLEY THE DOG

Carl Johnston
Entered by: Bowlplex plc
Height: 7'
Weight: 13st

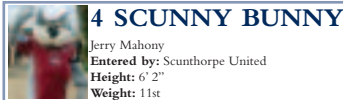
Roley the Dog is barking mad about this charity race and has every intention of taking the gold medal for Bowlplex. Roley has been on a strict training regime since entering, is regularly seen running around Bowlplex in Castleford and loves entertaining the kids as they enjoy their ten pin bowling experience.



8 CRoSBe

Clive Aylott
Entered by: Calderdale Council Road Safety
Height: 6' 6"
Weight: 13st

Has found his large feet make training "unbearable"! Sing the official CRoSBe song when you see him! "CRoSBe Bear is over there, He'll help you cross the road with care, To get yourself from here to there, Look and listen with CRoSBe Bear."



4 SCUNNY BUNNY

Jerry Mahony
Entered by: Scunthorpe United
Height: 6' 2"
Weight: 11st

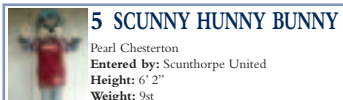
Not produced expectations at Huntington but a new racecourse maybe?!



9 BILLY BLOOD DROP

Philip McConnell
Entered by: National Blood Service
Height: 6'
Weight: unknown

Billy Blood Drop helps to promote the "give blood" message.



5 SCUNNY HUNNY BUNNY

Pearl Chesterton
Entered by: Scunthorpe United
Height: 6' 2"
Weight: 9st

First outing in mascot racing. Should have run at Huntington, but failed to make the racecourse!



10 BABY AL VALLIGATOR

the
Entered by: Lightwater Valley Theme Park
Height: the
Weight: the

One of three entries from the same stable. These cuddly crocs from Lightwater Valley are aiming for a 1-2-3, so don't expect them to be snapping at the heels of their competitors! They'll be at the front of the pack to claim the Ultimate victory!

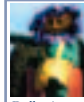
WETHERBY MASCOT RACE



11 SALLY VALLIGATOR

the
Entered by: Lightwater Valley Theme Park
Height: the
Weight: the

One of three entries from the same stable. These cuddly crocs from Lightwater Valley are aiming for a 1-2-3, so don't expect them to be snapping at the heels of their competitors! They'll be at the front of the pack to claim the Ultimate victory!



18 DOLLY DAISY

Lucy Gill
Entered by: Saint Michaels Hospice
Height: 6'
Weight: unknown

Dolly is a vital member of the Saint Michaels Hospice fundraising team & is well known throughout the Harrogate District. Although she has recently performed in a ballet at the Harrogate International Centre this is her debut race. She is in good form despite carrying extra weight from an excessive intake of cream cakes.



12 HARRY VALLIGATOR

the
Entered by: Lightwater Valley Theme Park
Height: the
Weight: the

One of three entries from the same stable. These cuddly crocs from Lightwater Valley are aiming for a 1-2-3, so don't expect them to be snapping at the heels of their competitors! They'll be at the front of the pack to claim the Ultimate victory!



19 BANANA ARMY I

Neil Carpenter
Entered by: Leukaemia Research
Height & Weight: Exceeds EU regulations for a banana

Chippie is an experienced rugby league player and at the peak of physical fitness. Is raising money for Leukaemia Research and hopes to live up to the good performances that the Banana Army do around the country.



13 SONNY THE SUNFLOWER

Robert "Roystone" Rogerson
Entered by: Sze Ryder Care Manoflands Hospice, Ousehope
Height: 6' 1"
Weight: 12st

A moderate sort on the flat. A decent third at the Huntington Grand National 2005. This ryder has had intensive training. Large petals may be a problem but this mascot's talent has grown and grown. Prefers south facing courses. Roystone is determined to bring the prize money home for the hospice. A member of Worth Valley YFC, he has vowed to leave Pete the Pint in his dust.



20 BANANA ARMY II

Danny Normington
Entered by: Leukaemia Research
Height: ?
Weight: ?

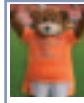
This mascot ran in the London Marathon last weekend. Unfortunately the man inside it didn't as he was busy supporting the launch of "Balcony", the fantastic new lingerie store located in the Royal Arcade, Keighley. He will not be wearing the goods beneath his costume today however.



14 CATCH ME IF YOU CAN!

George Wilkinson
Entered by: Great Smeaton YFC
Height: 5' 6"
Weight: not sure

He's fast and he's cunning but his jumping ability is yet to be trailed this season. If he gets over the first hurdle he has every chance.



21 BLOOMFIELD BEAR

Gary Newcombe
Entered by: Blackpool Football Club
Height: 5' 10"
Weight: 13st

Tangerines are for life not just for Christmas!



15 "PHIL" THE PRINTER CHARACTER

Nick Smith
Entered by: Cartridge World
Height: 6' 6"
Weight: 11st

"Phil" ...up your printer cartridges! Phil is the mascot of one of our Fence sponsors for this race, watch him leap for joy as he jumps the Cartridge World fence No. 5.



22 YORKSHIRE TEA TEAPOT

Chris Hayes
Entered by: Taylors of Harrogate
Height: 5' 5"
Weight: 15st 3lb

The perfect "blend" of speed, agility and stamina!



16 BROCK THE BADGER

Wayne Syson
Entered by: Broxhove Borough Council
Height: 6'ish
Weight: not very heavy

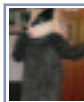
Brock won't be badgering around when it comes to running today's race. He is all 'set' for victory and hopes that all the extra training he has put in pays off.



23 SNAPPY CROC

Alexander McNeil
Entered by: S.N.A.P.P.Y.
Height: Unknown
Weight: Unknown

Row, Row, Row your boat gently down the stream, if you see a Crocodile don't forget to scream!



17 BROOKE THE BADGER

Emma Georgiou
Entered by: Broxhove Borough Council
Height: 5' 10"
Weight: a lady never tells!

Brooke's start to the season has been slow. She is the mother of two young cubs and has found getting out to train difficult. However, she hopes to 'set' the standard and finish somewhere near the back.

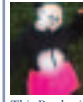


24 ROAR

Adrian Brawn
Entered by: Blackburn Rovers
Height: 6'5"
Weight: 16st

The Club mascot for Blackburn Rovers FC. Will try to wind up the other competitors, may even try to change colours! Good penalty taker but will he be able to produce the same performance on the racetrack? One to watch.

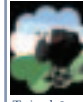
WETHERBY MASCOT RACE



25 PRINCESS PRUCILLA PRECIOUS PENISTONE PANDA

Gemma Wroe
Entered by: Penistone YFC
Height:
Weight:

This Panda ain't just a flirt, she's a dead cert!



32 BAA...RBARA

Ryan Atkinson
Entered by: Winkley cum Grantley YFC
Height: 6'
Weight: 10'/st

Trained & sponsored by The Black Sheep Brewery plc. "The best baa none!" Baa Baa Black Sheep, have you any wool? Yes sir, yes sir, three pints full!



26 PC BILL

Alan Hancock
Entered by: South Yorkshire Police
Height: 8'
Weight: 13st

Tallest "officer" in South Yorkshire Police force - you don't mess with him on or off the course!



33 BILLY BOTTLE

William Mitchell
Entered by: British Glass
Height: 6' ish
Weight: Much heavier than he was

Is keen to encourage both the recycling of glass and the rinse and return of doorstep delivered pints, especially those from the Dairy Farmers of Britain. Performance may be effected by the over consumption of a different kind of pint over the past 20 years.



27 TIPPY TAP

Fiona Lobley
Entered by: Wateraid
Height: 5' 2"
Weight: 10'/st

None of us can live without water, so I'm running this race to remind us how lucky we all are to have access to clean water on tap. Hoping for soft going!



34 JENNY THE JAR

Yvonne Wood
Entered by: British Glass
Height: Jar-gantic
Weight: Depends on whether full or empty

Has a never changing dazed expression on her face as does the costume. This is the sister of Billy Bottle and is keen prove that the high number of jars she has consumed over the years have made her into the fit specimen we see today.



28 BLEEPER

Matthew Clarke
Entered by: South Yorkshire Fire & Rescue Service
Height: 6' 6"
Weight: 13'/st

Bleeper is a friendly, larger-than-life mascot designed with young children in mind. He helps to highlight the importance of having smoke alarms and testing them regularly, hence his "nose" - a big red test button which bleeps when pressed.



35 CLOVER THE AVYFC SUPER COW

Richard Priestley
Entered by: Aire Valley YFC
Height: 6' 3"
Weight: 10 st

Clover has really been looking forward to this charity race - her first outing as a mascot. Clover is helping to promote Aire Valley YFC and the 'reduce, re-use & recycle' message. "She gives plenty in the parlour and is ready to give plenty on the track - so mooove over & make way for Clover!"



29 BLAZE BEAR

Steve Makepeace
Entered by: South Yorkshire Fire & Rescue Service
Height: 7' 2"
Weight: 15'/st

Blaze Bear helps the Fire Service National Benevolent Fund with numerous important projects. Blaze has a high profile within the UK Fire Service and is successfully assisting in a number of fire safety education projects.



36 MISS PORKY PIG

Anna Bulmer
Entered by: Amotherby YFC
Height: 5' 8"
Weight: 10'/st

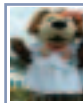
Miss Porky Pig is nutrition on a mission!



30 UDDERLICIOUS

Hannah Goldsborough
Entered by: Winkley cum Grantley YFC
Height: 5' 6"
Weight: 9'/st

Trained & sponsored by Agricultural Supply Services Ltd. A young, fit heifer, always on the pull. She is udderley fantastic!



37 TIFF

Helen Roberts
Entered by: Wales YFC
Height: 5' 4"
Weight: Unknown

Fresh from helping with the lambing in the Welsh hills, Tiff, the intrepid border collie, along with Tiff, a traditional auburn coated welsh sheepdog are hoping to do Wales YFC proud!



31 MARK THE MOLE

Richard Stockil
Entered by: Winkley cum Grantley YFC
Height: 5' 10"
Weight: 11st

Trained & sponsored by HACS Construction Ltd. Mark the Mole can dig his way out of any situation!



38 TAFF

Andrew Lewis
Entered by: Wales YFC
Height: 5' 8"
Weight: Unknown

Fresh from helping with the lambing in the Welsh hills, Tiff, a traditional auburn coated Welsh sheepdog, along with Taff, the intrepid border collie are hoping to do Wales YFC proud!!

WETHERBY MASCOT RACE

**39 SOCRATES THE CAT**

Kathleen Armstrong
Entered by: Eureka! The Museum for Children
Height: 6"
Weight: 11st 8lb

Socrates is the official mascot for Eureka!, the UK's first and largest children's museum. He loves playing with children when they visit the museum and is known for his amazing mathematical abilities!

**40 YORKIE**

Matthew Wilkin
Entered by: York & District YFC
Height: 5' 6"
Weight: 11st

Making a much awaited racecourse debut, and fuelled by our favourite chocolate product, this YORKIE boy hopes to wrap up a success here today. Members of York YFC Club are crossing their fingers for a tough 'Not for Girls' performance with high expectations for the sweet taste of success. Carrying a little extra weight from an intensive chocolate based training schedule we hope victory doesn't melt away.

**41 PONTE PIG**

Douglas Diggle
Entered by: Pontefract YFC
Height: 5' 10"
Weight: 12st 9lb

Diggley Piggie the Ponte Pig – the fastest four trotters in the West!

**42 i C THE BEAR**

Lee Canhan
Entered by: Tees Active Ltd
Height: 6' 2"
Weight:

i C the Bear is Tees Active's official ice skating mascot. He is most often found practising his moves on the ice at Billingham Forum, not on a race course!

**43 SCOTTIE THE NETTO DOG**

Rob Battye
Entered by: South West District
Height: 5' 6"
Weight: 9st

A young wiper snapper. Ready to race to the finish for a good cause.

**44 COMPOST RULES**

Kelly Armitage
Entered by: Holme Valley YFC
Height: 5' 8"
Weight: 9 1/2 st

This entry puts the Valley into Home Composting. Kelly is the model YFC member with a "have a go at anything" attitude. She will be nice as pie before the race, but make no mistake - when the horn blows the competitive streak will kick in & she will barge, trip and scratch her way past the other runners to be top of the heap.

**45 SELBY SWAN**

Tim Atkinson
Entered by: Selby & District YFC
Height: 6' 5"
Weight: 9 1/2 st

Will the Selby Swan be off to a flying start?! The course vets will be keeping a close eye on this individual in case bird flu strikes, though if it's a tight finish a swan dive could result in a victory by a long neck.

**46 HOLLY THE HEAP**

Hollie Thomas
Entered by: Sports Turf Research Institute
Height: 5' 5"
Weight: 9 1/2 st

Shortest of the Sports Turf Research Institute's two runners in this race. This is the best looking compost heap you will ever meet. Resembles a dalek from a distance and could exterminate the competition if she gets a good start and the crowd get behind her. Has no previous form of note but not as rubbish as the bin may suggest.

**47 DONNY DOG**

Andy Liney
Entered by: Doncaster Rovers
Height: 5' 6"
Weight: 9 1/2 st

Long in the tooth, but still managed a creditable second (from last!) in the recent Doncaster Half Marathon. A stayer!

**48 RUBBISH RUNNER**

Catherine Hancock
Entered by: Waste Management Unit – NYCC
Height: 5' 3"
Weight: 9st

Representing North Yorkshire County Council's Waste Management team – encouraging people to Reduce, Re-use & Recycle across the County. Please come & visit us in the Yorkshire YFC manquee or call 01609 532512 to find out more.

**49 ROARY THE TIGER**

Steve Robson
Entered by: Hull City AFC
Height: 5' 6"
Weight: 10st 8lb

Despite the fearsome reputation of his species, Roary is a very fun loving Tiger who loves to entertain the crowds at the KC Stadium & attends dozens of charity events throughout the year. He's also very fond of children, although claims he couldn't eat a whole one!

**50 BLADE RUNNER**

Richard Stutard
Entered by: Sports Turf Research Institute
Height: 6' 3"
Weight: 12st

The off-spring of a mule & a whippet - the result, this "Muppet" within this costume has both stamina & speed. This is a mascot that the others will look up to & he will be at one with the turf. His catchphrase "when the going gets rough, the turf gets going."

**51 THE TADCASTER & WETHER-BEE**

Guy Richmond
Entered by: Tadcaster & Wetherby YFC
Height: 5' 9"
Weight: 11 1/2 st

The Tadcaster & Wether-Bee wants the world to know that...Young Farmers gives you such a BUZZ!!

**52 WIZBIT**

Adam Clayton
Entered by: Knaresborough YFC
Height: 5' 10"
Weight: 10st

Wizbit has taken his training very seriously with a special diet of burgers & chips. His trainer has kept a close eye on his exercise regime and feels he has a good chance of completing the course.

WETHERBY MASCOT RACE



53 WOOLLY THE WOOLPACK

Philip Hangrave
Entered by: Esholt YFC
Height:
Weight:

"Woolly – the Woolpack", packed with wool from hill sheep known for being agile & sure-footed. (Have you ever tried to catch one?!)

60 PASTURISED POLLY

Polly Throup
Entered by: Silsden with Skipton YFC
Height: 5' 6"
Weight: 8 1/2 st

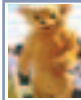
Pasturised Polly has been in extreme training for over a year for this event. She has strong bones from drinking the recommended pint of milk a day – so the other competitors better watch out!



54 SHAGGY THE HELMSLEY SHEEPDOG

Richard Fairburn
Entered by: Helmsley YFC
Height: 6' 8"
Weight: 13st

Jumps for fun but first time out over hurdles. Goes well for an old dog, may finish faster than you think!!



61 LENNY THE BEAR

Beth Cameron
Entered by: St Leonard's Hospice, York
Height: unknown
Weight: unknown

Running on behalf of St Leonard's Hospice today as all their staff are on a charity walk. Hot Tip – Beth ran in last week's London Marathon and will find this trip a walk in the park! Aiming to pick up the £150 first prize for St Leonard's Hospice Charity.

55 BROUGH BEE

Brian Sherriff
Entered by: Worsbrough YFC
Height: 5' 7"
Weight: 11st

A flighty little thing, with a sting in his tail!



62 MR HEARTY BEAT

Lisa Hammond
Entered by: British Heart Foundation
Height: 5' 6"
Weight: unknown

Just returning to form after recently giving birth to a little sweetheart of her own. Running to raise money for the British Heart Foundation. Is familiar with the turf after serving time at the Sports Turf Research Institute so will adjust to the underfoot conditions well. Has run marathons before so this heart may be one to beat.



56 PETE THE PINT

Kenny Wood
Entered by: Worth Valley YFC
Height: 6' 2"
Weight: 13st

Proudly sponsored by Goose Eye Brewery, this pint of Bronte Bitter is a big favourite with the Worth Valley Senior members. It is the ultimate in recycled mascots as Pete used to be known as Cliffe. With long striding Kenny (leader of the Kenny Club) within this mascot it could be in with a shout of winning by a good head.



63 DARLO DOG

James
Entered by: Darlington FC
Height: unknown
Weight: unknown

Darlington FC's official mascot Darlo Dog has helped to spur the Quakers on to the 10th position in League Two this season (before yesterday's game against Wycombe). The only League Two representative in the steeplechase, this dalmation has threatened to punch above his weight and knock spots off the upper league opposition.



57 MAD DOG

Craig Richardson
Entered by: Hillsborough Leisure Centre
Height: 6'
Weight: 12 st

Join Mad Dog @ Hillsborough Leisure Centre every school holidays for Mad Dog missions School Holiday Camps.



64 LUCAS THE KOP CAT

Entered by: Leeds United AFC
Height: unknown
Weight: unknown

The official mascot of the finest football team in the world, Leeds United, Lucas was actually awarded man of the match at Leeds home defeat vs Cardiff by manager Kevin Blackwell in December as none of the Leeds players deserved it. Lucas took over from Ellie the Elephant as the club mascot in 2005 and was named after Lucas Radebe, formerly Leeds captain.



58 LAMBY

Chris Barrett
Entered by: EBLEX
Height: Short
Weight: Fly

Who ate all the pies! Don't let this sheepish character pull the wool over your eyes. He could knock the bookies for six if he gets into his gazelle like stride. Could be a contender if he can manage to bend over & tie his laces. Hey Beefy 'Get with the Rhythm'!



65 BEEFY

Neil Earnshaw
Entered by: EBLEX
Height:
Weight:

This meaty mascot is proud to be promoting the best meat in the world, British! Other mascots should beware if Beefy brings his bat as he will knock them for six. Look out for the personal battle between him and Lamby.



59 DONCASTER'S DESPERATE DAISY

Dan Nicholls
Entered by: Doncaster YFC
Height: 5' 10"
Weight: 12st

This desperate cow will sleep with anything with a pulse. She's from a nice green field in Doncaster, which is the young farmer's capital of Yorkshire.



66 THOMAS THE CAMP ENGINE

Matthew Lambert, Thomas Ogden & Vicki Booksbank
Entered by: Worth Valley YFC
Height: Average
Weight: Much more than average

Caution, contains an Ogden! This train has been modelled on one that works on the Worth Valley Railway, a small track named after the Worth Valley Young Farmers Club. This 2 man, 1 woman mascot may not have speed agility or co-ordination but God help anyone who gets in the way of it.

WETHERBY MASCOT RACE

67 CATTERICK YFC

Mark Walton
Entered by: Catterick YFC
Height: 6' 3"
Weight: 13 1/2 st

Catterick bred & trained, coming out of a stable on top form with its last ten runs each being placed in high priced races. This mascot is coming here today on impressive form & showing excellent fitness from his training with the Army.



70 SUN SQUIRREL

??
Entered by: ??
Height: ??
Weight: ??

68 CAWTHORNE YFC

??????
Entered by: ?????
Height: ?????
Weight: ?????



71 SHERLOCK

Rachel Phillips
Entered by: West Yorkshire Police Community Safety Team
Height: ?????
Weight: ?????

Purchased by WY Community Safety Team as a puppy in 2000, Sherlock got his name after the YTV Calendar news programme launched a competition for viewers to name him. He promotes neighbourhood watch schemes to try & cut burglaries. Crime figures show that he has been successful – but who would mess with a 6' hound! Today Calendar reporter Rachel Phillips is inside him – so watch out for a report on Monday night's Calendar.

69 THORNE & HATFIELD

Entered by: ?????
Height: ?????
Weight: ?????

72

?????
Entered by: ?????
Height: ?????
Weight: ?????

North Yorkshire County Council's "Community Recycling Fund" is generously supporting the Yorkshire Federation of Young Farmers Clubs' promotion of household waste reduction today and at the Yorkshire County Show at Pateley Bridge on 4 June. Generous support has also been provided by our sponsors, **Cartridge World, Corus, Recycling Action Yorkshire, Rockware Glass, Berryman Glass, Sky Bet, Wyedean weaving and Rob Wood Contractor.**

Aged 10 to 26? Join Young Farmers in our Marquee today.

This mascot steeplechase originated from an idea that the members of Yorkshire Federation of Young farmers Clubs Came up with to promote their organisation, raise money for charity and encourage recycling in rural areas. Members from many of the 49 Young Farmers clubs have designed and created their own mascots to get involved in this race.